

commercial brochure



B3



B1

RekuSLIM Eko are high efficient heat recovery units and they represent the ideal solution to control the air quality while saving energy with efficiency in excess of 90% energy recovery operation.

Ideal for all requirements in any qualified installation: restaurants, offices, meeting rooms, classrooms, shops and warehouses.

Key point of the range is the high added value of the control and regulation system. The unit can be equipped with many autonomous, plug & play, control accessories that communicate with the integrated touch screen control.

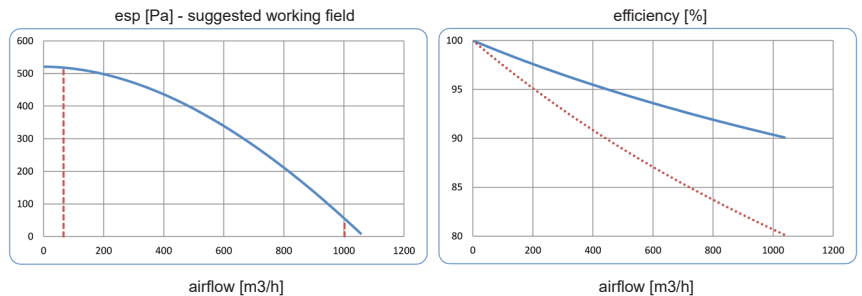
Wide range air flow layout configuration:

Air flow layout can be configured on horizontal or vertical installation (see installation manual for further details).

technical data

Airflow Range	[m <sup>3</sup> /h]	70-1000
Supply	[V/Ph/Hz]	230/1/50
Power intake (**)	[W]	243
Current intake (**)	[A]	1,8
Lp Sound Pr. level (**) ex/sup	[dBA]	38/54
Weight	[kg]	163
Protection class	[IP]	50

performances



Sound Data	L <sub>wa</sub> tot	63 Hz	125 Hz	250 Hz	500 Hz	1 kHz	2 kHz	4 kHz	8 kHz	
Inlet	[dB(A)]	49,4	42,6	43,1	39,8	41,2	40,1	40,3	36,8	30,7
Outlet	[dB(A)]	68,3	53,2	58	59,2	57,7	60,8	62,6	60,1	56,6

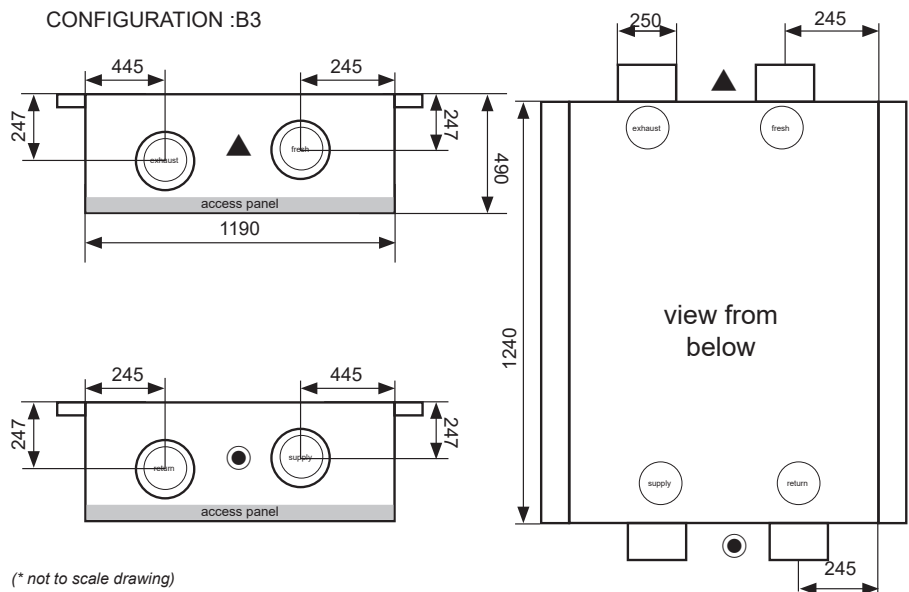
main features

- Control system**  
Touch screen control is provided on demand. An easy plug and play system allows a fast installation. Probes or accessories can also be connected to the unit easily, by a quick plug & play wiring systems.
- Frame**  
Casings are made in high gauge pre-coated steel. Panels are double skin with 25-30 mm XPS insulation.
- Heat exchangers**  
Counterflow high efficiency PE heat exchangers. Certified to EN 308 standards .
- Fan set**  
SISW centrifugal fans are statically and dynamically balanced. Impeller are directly driven by EC motors, ERP2018.
- Defrost**  
Defrost by temporary flow imbalance. For cold environments air preheating can be added on demand.
- Bypass**  
Free cooling (summer) 100% bypass damper
- Accessories**  
A wide range of accessories is available.
- Communication features**  
On demand are available Modbus Module and RFM Module.
- Service**  
On the access side of the units, removable panels make installation and maintenance operations fast and easy, ensuring all components can be easily and conveniently removed.

(\*) Conditions efficiency with condensation:  
Winter: a) Return air 20 ° C 60% HR b) Outdoor air: -10 ° C 80% HR  
- Data refers to nominal airflow and clean filter (G4+F7)  
(\*) efficiency dry as directive 2009/125/EC

(\*\*) Pressure is measured at 1,5 m measured under the unit (middle)  
(\*\*) Performance for each branch (out of two), nominal point: see ecodesign datasheet  
- cal/p control available as option

dimensions



(\* not to scale drawing)  
possible available horiz. configuration : A3-A4-B5-B6- C3-C4-D3-D4  
possible available vert. configuration : B1-B3-B4-C1-C2-D1-D2-A3-A4

commercial brochure



B6

RekuSLIM Eko are high efficient heat recovery units and they represent the ideal solution to control the air quality while saving energy with efficiency in excess of 90% energy recovery operation.

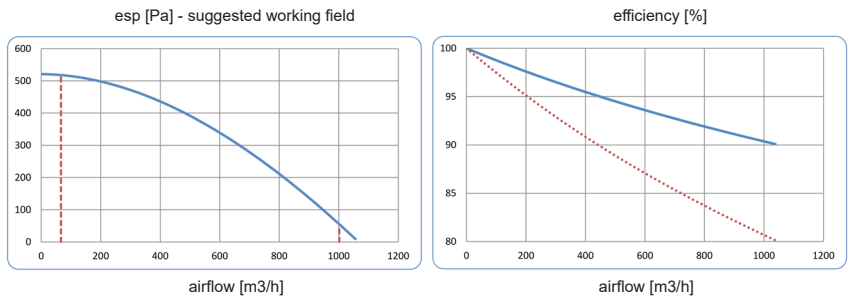
Ideal for all requirements in any qualified installation: restaurants, offices, meeting rooms, classrooms, shops and warehouses.  
Key point of the range is the high added value of the control and regulation system. The unit can be equipped with many autonomous, plug & play, control accessories that communicate with the integrated touch screen control.

Wide range air flow layout configuration:  
Air flow layout can be configured on horizontal or vertical installation (see installation manual for further details).

technical data

Airflow Range	[m <sup>3</sup> /h]	70-1000
Supply	[V/Ph/Hz]	230/1/50
Power intake (**)	[W]	243
Current intake (**)	[A]	1,8
Lp Sound Pr. level (**) ex/sup	[dBA]	38/54
Weight	[kg]	163
Protection class	[IP]	50

performances



Sound Data	L <sub>wa</sub> tot	63 Hz	125 Hz	250 Hz	500 Hz	1 kHz	2 kHz	4 kHz	8 kHz	
Inlet	[dB(A)]	49,4	42,6	43,1	39,8	41,2	40,1	40,3	36,8	30,7
Outlet	[dB(A)]	68,3	53,2	58	59,2	57,7	60,8	62,6	60,1	56,6

main features

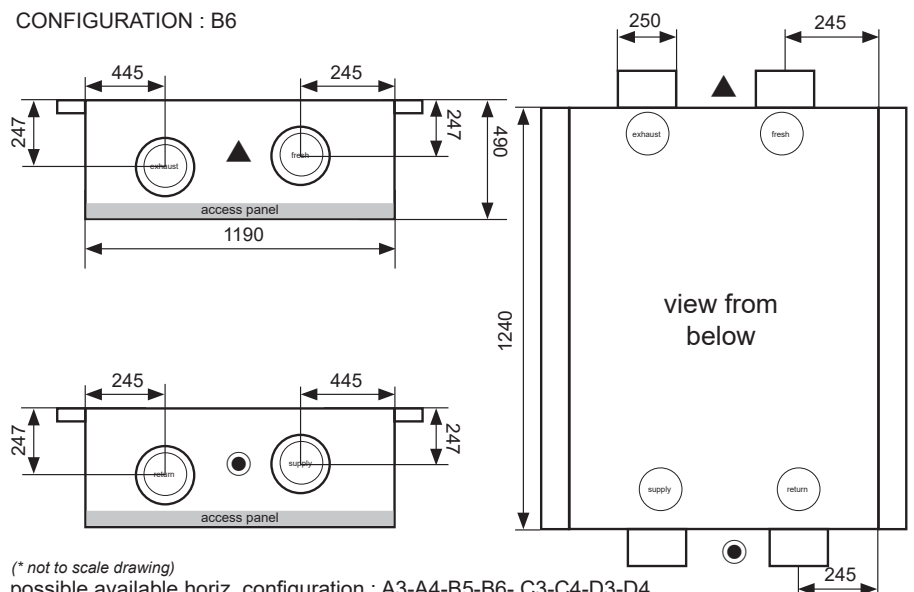
- **Control system**  
Touch screen control is provided on demand. An easy plug and play system allows a fast installation. Probes or accessories can also be connected to the unit easily, by a quick plug & play wiring systems.
- **Frame**  
Casings are made in high gauge pre-coated steel. Panels are double skin with 25-30 mm XPS insulation.
- **Heat exchangers**  
Counterflow high efficiency PE heat exchangers. Certified to EN 308 standards .
- **Fan set**  
SISW centrifugal fans are statically and dynamically balanced. Impeller are directly driven by EC motors, ERP2018.
- **Defrost**  
Defrost by temporary flow imbalanceing. For cold environments air preheating can be added on demand.
- **Bypass**  
Free cooling (summer) 100% bypass damper
- **Accessories**  
A wide range of accessories is available.
- **Communication features**  
On demand are available Modbus Module, and RFM Module.
- **Service**  
On the access side of the units, removable panels make installation and maintenance operations fast and easy, ensuring all components can be easily and conveniently removed.

(\*) Conditions efficiency with condensation:  
Winter: a) Return air 20 ° C 60% HR b) Outdoor air: -10 ° C 80% HR  
- Data refers to nominal airflow and clean filter (G4+F7)  
(\*) efficiency dry as directive 2009/125/EC

(\*\*) Pressure is measured at 1,5 m measured under the unit (middle)  
(\*\*) Performance for each branch (out of two), nominal point: see ecodesign datasheet  
- cal/p control available as option

dimensions

CONFIGURATION : B6



(\* not to scale drawing)  
possible available horiz. configuration : A3-A4-B5-B6- C3-C4-D3-D4  
possible available vert. configuration : B1-B3-B4-C1-C2-D1-D2-A3-A4